

NL2120: A long-term nature based vision for the Netherlands

No doom and gloom, but green and bloom...

Ingrid Coninx
Project manager | Social scientist climate adaptation
Wageningen University & Research



Introduction



- Dutch climate change challenges
- Long term nature based vision: why, how and what?
- Impact so far
- Possible explanations for success
- What is next?

Uncommon weather impacts



Foto: Peelbrand 2020 -Bert Janssens Eindhovens -Dagblad



Floods 2021 Netherlands Photo credits: Bertram de Rooij



Foto: Gerald Harmisen (2020)

But also other crises

Housing



Farming

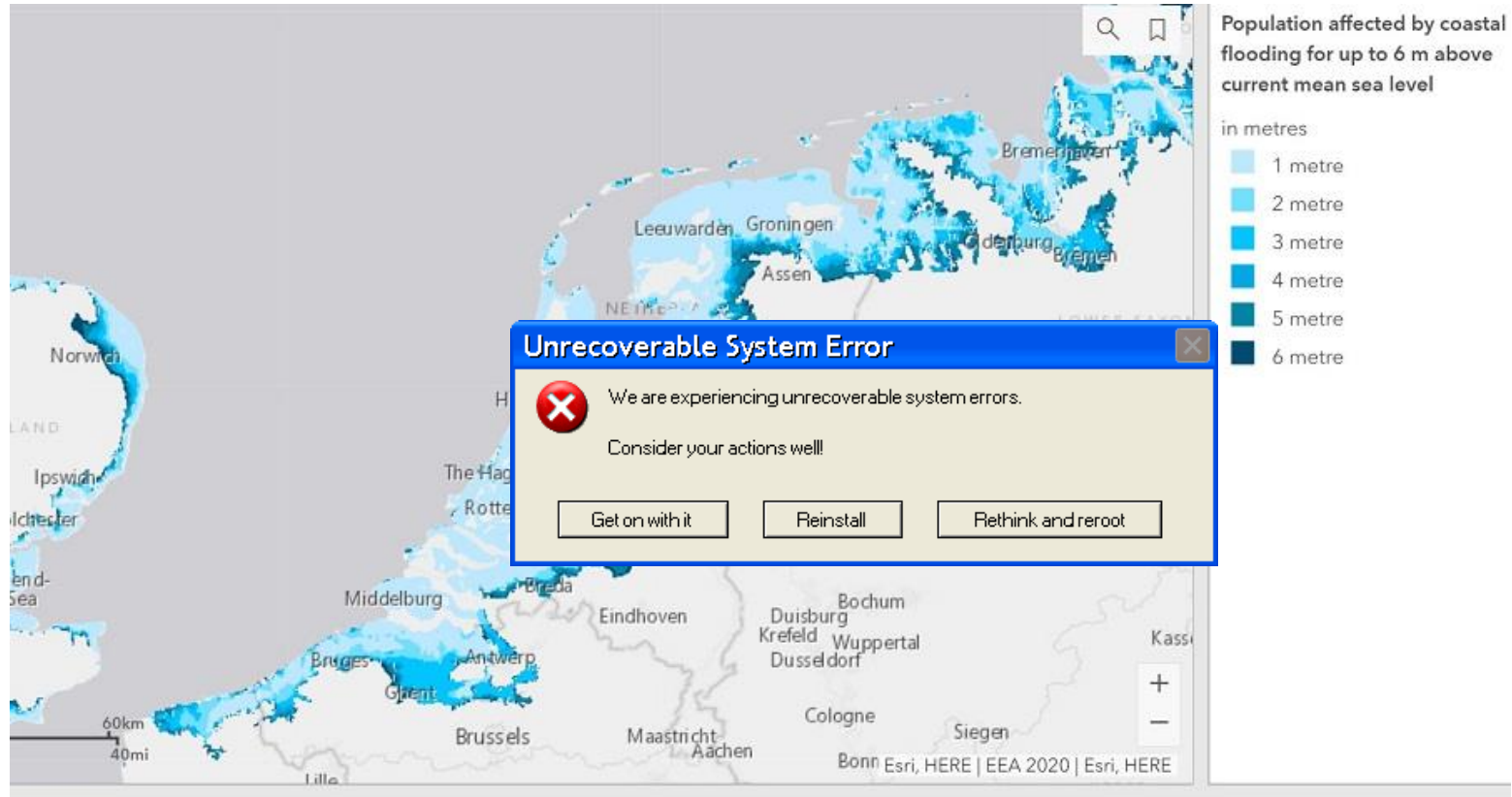


Energy



Biodiversity





Population living within the respective height above mean sea level (in metres):

Source: EEA

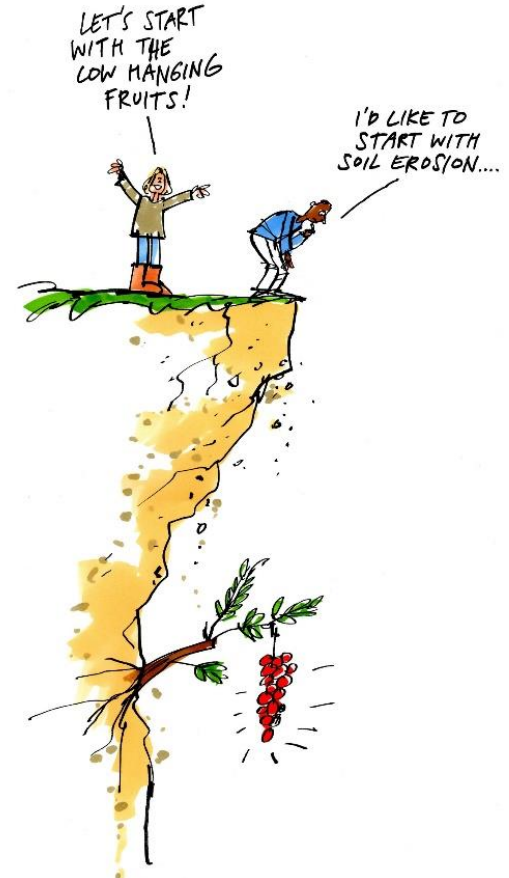
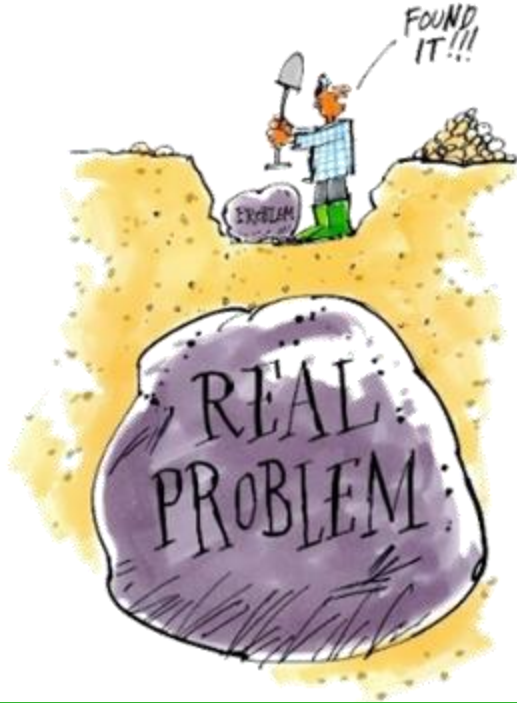
Uncertainty, complexity, sectoral approach



**WE ARE DROWNING
IN INFORMATION
WHILE STARVING FOR
WISDOM**



In search for a transformation of our systems



If you always do what you always did,
you will always get what you always got

Albert Einstein

How will the Netherlands look like in 100 years?

“Visions are essential to inspire, mobilize and keep a collective of people on track toward their goals”

Anderson, M. (2019)

Wageningen University & Research
Our mission

To explore
the potential
of nature to
improve the
quality of **life**



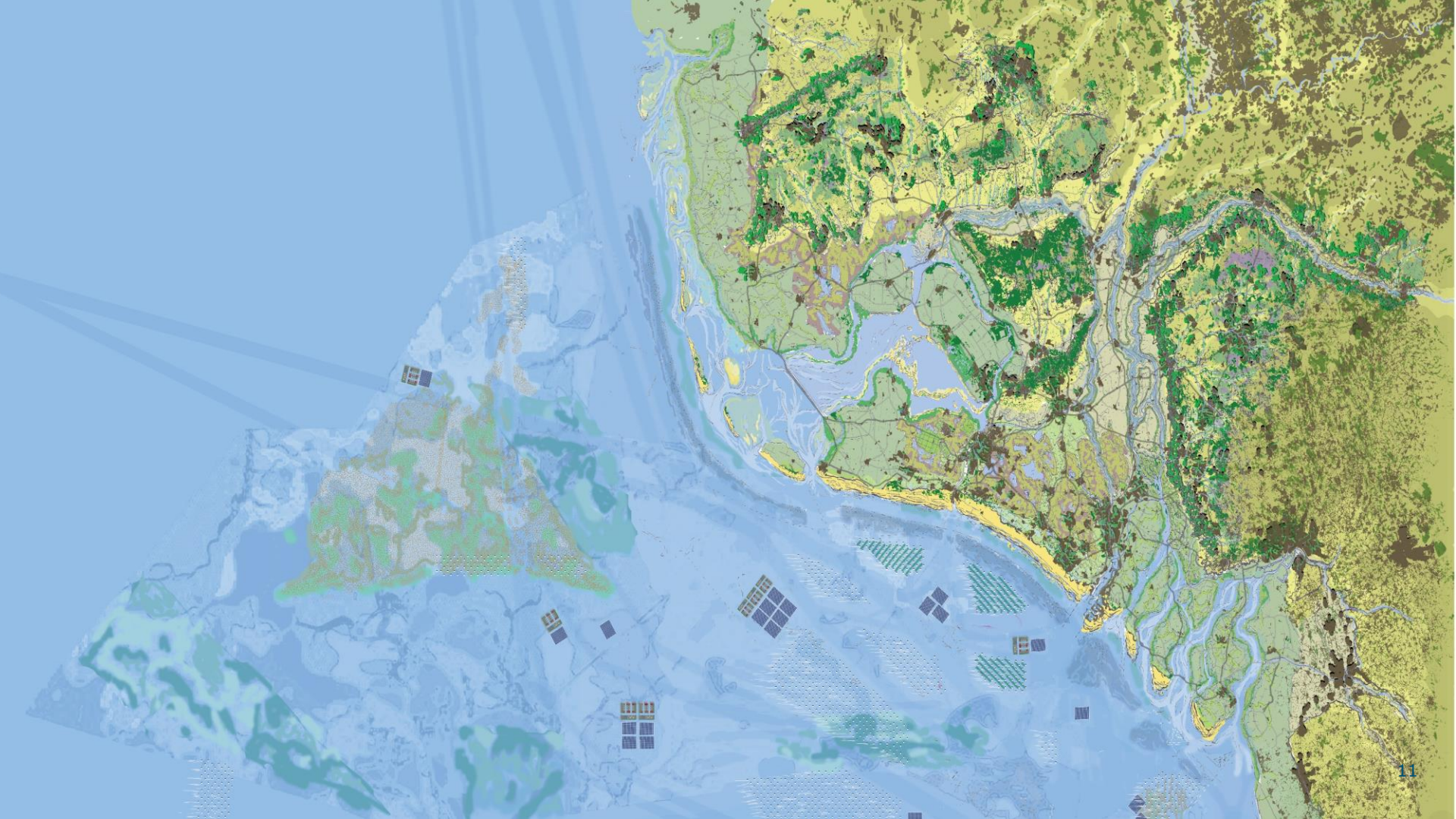
2021

2120

NL as living lab

The future starts today





The Netherlands in 2120

Our assumptions

- > 1.5m sea level rise
- > changing climatic zones
- > more extremes

- ...a broad invitation
- ...an integrated perspective
- ...an imagined future
- ...a positive choice

- > an open view on a potentially **DESIRED** future
- > bringing together in a clear **OPEN** narrative
- > focus on **DECISIVE** choices
- > with an emphasize on **OPPORTUNITIES!**

5 guiding principles

1. Natural system as starting point

Landscape, soil, water system

2. Water as leverage

Retain, (re)use, store, drain

3. Circular and climate positive economy

Climate positive, reuse of resources, zero waste, circular agriculture

4. Adaptive spatial planning

Working with nature, nature-based solutions

5. Nature-inclusive society

Nature conservation, biodiversity, ecosystem services

A green future for the Netherlands 2120

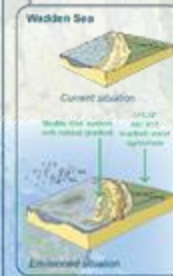
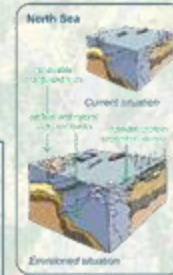
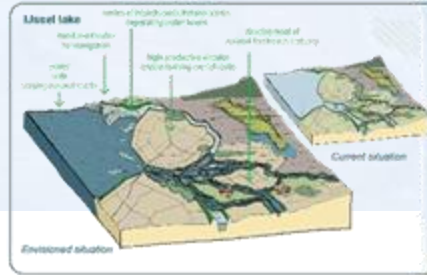
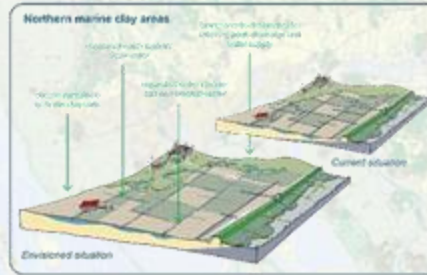
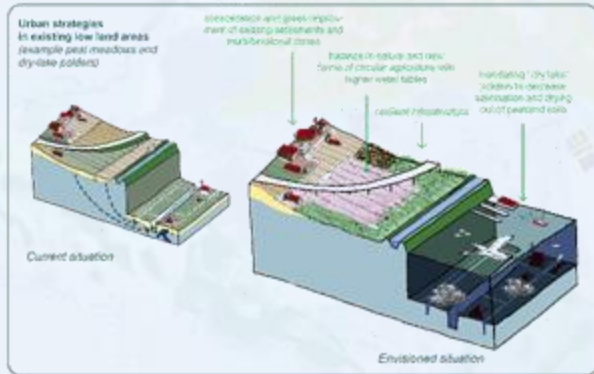
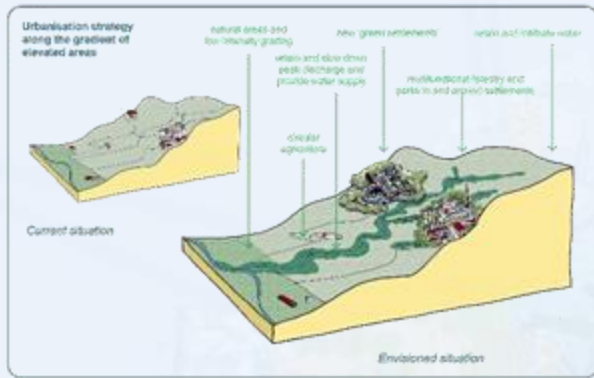
hope

... One map

... Systemic approach

... No doom, but appealing and positive

Integrated strategies, packages of solutions



Disclaimer

blueprint

“Visions are not meant to be static, but rather give an open-ended desirable state allowing improvement through revisiting, reflecting or even reframing them”

Hölscher K., Frantzeskaki N., Pedde S., Holman I. (2020), Agency Capacities to Implement Transition Pathways Under High-End Scenarios. In: Hölscher K., Frantzeskaki N. (eds) Transformative Climate Governance. Palgrave Studies in Environmental Transformation, Transition and Accountability. Palgrave Macmillan, Cham. https://doi.org/10.1007/978-3-030-49040-9_11

Invitation for a dialogue to build a shared story



- What is the future that you want?
- And why?
- What are your values?
- What do you care about?

The three spheres of transformation (O'Brien and Sygna, 2013, after Sharma 2007)

Impact so far....

Feed into societal dialogues



NL2120 is widely embraced
...beyond the urban rural divide
...beyond sectoral approaches
...at different levels

2120: een groen land met brede rivieren

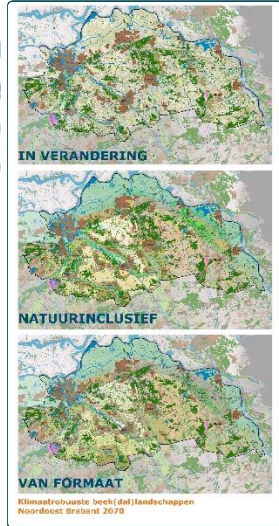
Het toekomstige van Nederland: hoe groen kan het worden? En hoe kan het groen blijven? Dit is de vraag die de Groene Hart en de Rijksoverheid nu aanpakken.

Hollands Groene Hart moet geen vergane glorie worden

De Groene Hart moet niet alleen een plek worden waar de natuur kan groeien, maar ook een plek waar de natuur kan blijven. Dit is de uitdaging die de Groene Hart en de Rijksoverheid nu aanpakken.

Zo ziet het Groene Hart eruit: wen maar vast aan verandering

TOEKOMST OF LUCHTFIETSERIJ? Het Groene Hart besta uit moeras, bos en veel recreatie. Om de klimaatverandering te bestrijden.



Researchers Illustrate A Climate-Proof Netherlands in 2120

This not-research approach can be applied to any coastal region.

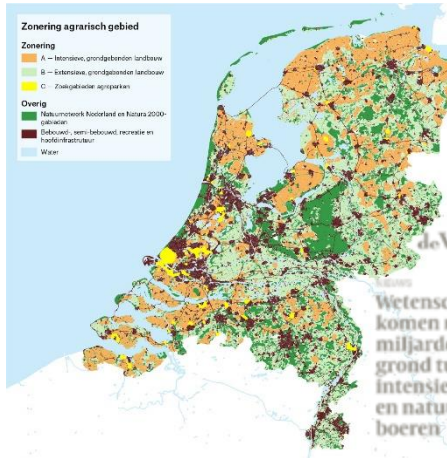


Impact so far...

- ... Considered in advice and policy
- ... Regional projects

Kiezen én delen
 Advies van de Studiegroep Ruimtelijke inrichting landelijk gebied

ABD TOPConsult
 Ruimte en omgevingsbeleid



DE BODEM BEREIKT?!

JUNI 2020

RIJ



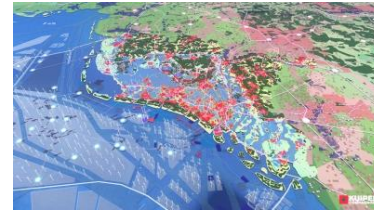
Op Waterbasis

Overeen met de haalbaarheid van ons water- en landschapssysteem



NL2100

De 22e eeuw begint nú



Klimaatrobuuste BEEK(DAL)LANDSCHAPPEN Noordoost Brabant

in perspectief

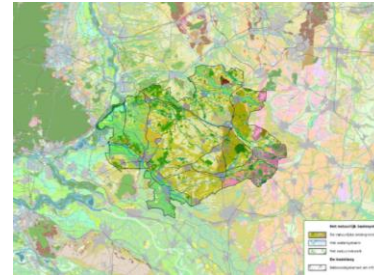
2050



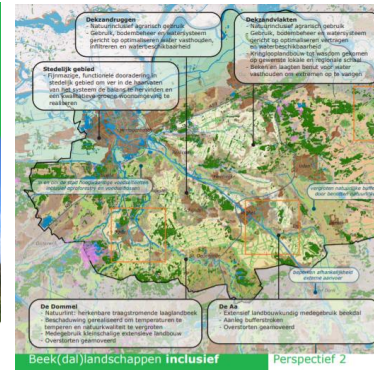
WAGENINGEN

Landbouw & Ruimte

Regio Noord-Brabant



PERSPECTIEF 2121
LAND MET EEN PLAN



Grenzeloze 8RHK

GEEF RICHTING, MAAK RUIMTE!

2018-2020



Why successful?

- Moment of the launch
- Momentum - call for long term perspective
- Relieved, hope, optimism
- Narrative that appeals across society
- Trust
- Policy discourse
- Money to be allocated – national and European level



What is next?



How do we get there?

- Fostering dialogues on how to get there at regional level
 - Regional specification of the vision
 - Setting up mission driven collaborations – quadruple helix (NGO, science, business, government)
 - Changing role of scientists – demand driven and society oriented
 - Pilots and experiments
 - Reflecting, learning and adjusting to transform systems
- ! Government fund available: at national and EU level

Thank you!

NL2120 team

- Martin Baptist
- Tim van Hattum
- Stijn Reinhard
- Michael van Buuren
- Bertram de Rooij
- Xiaolu Hu
- Sabine van Rooij
- Nico Polman
- Sander van den Burg
- GerJan Piet
- Tom Ysebaert
- Brenda Walles
- Jeroen Veraart
- Wieger Wamelink
- Bram Bregman
- Bram Bos
- Trond Selnes

Contact

Ingrid.Coninx@wur.nl

More information

[The Netherlands in 2120 - WUR](#)

