



Adaptation, hopefully



Jon Barnett

School of Geography, Earth and
Atmospheric Sciences

The University of Melbourne



Outline

- I. Adaptation, actually
- II. New ways of working
- III. Enabling change
- IV. Hope itself
- V. Conclusions

Saibai Island's new seawall cost almost \$25 million. *(ABC News: Emilia Terzon)*

I. Adaptation, actually

A shift, from impacts, vulnerability, barriers and limits

To adaptation *per se*

- what seems to work?
- what more can be done?
- how to enable adaptation?



II. New ways of working

Three challenges for applied research:

- Adaptation is politically risky
- Meaningful engagement is hard
- Precedent, scale, and consistency

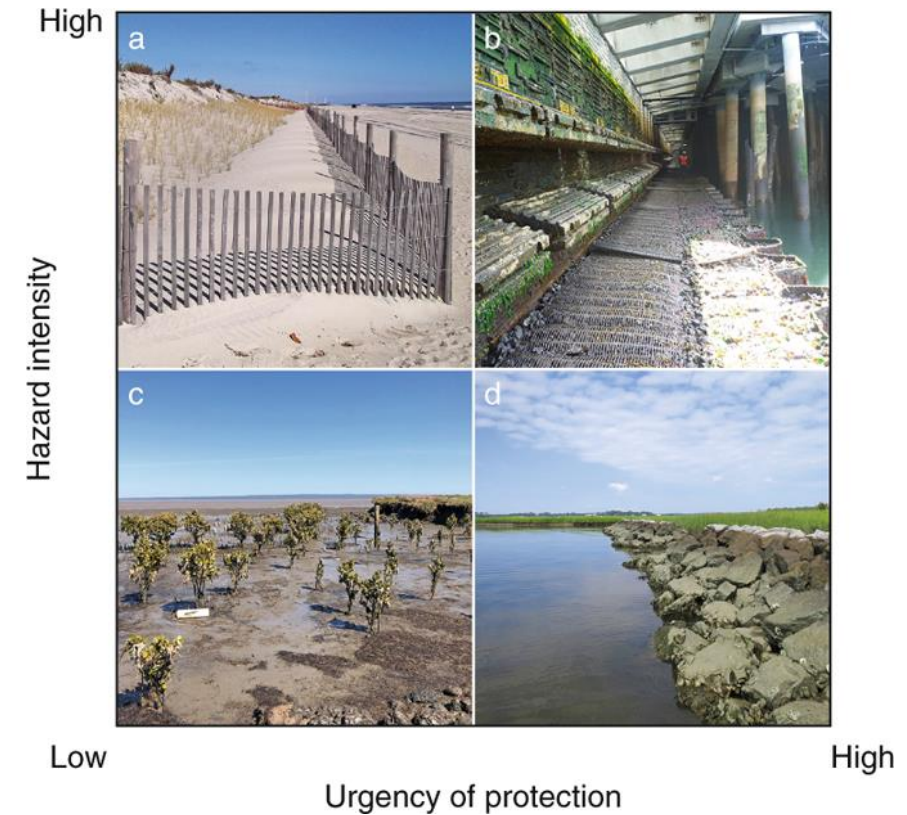
= network of organisations that combine governments and research institutions?

III. Enabling change

From all losers to many winners

- Mitigation analogy
- Rainwater tanks

Nature based solutions in the coastal zone



Morris et al *Nature Clim Ch* (2020)

IV. Hope itself

Hope is positively associated with goal-directed action on climate change

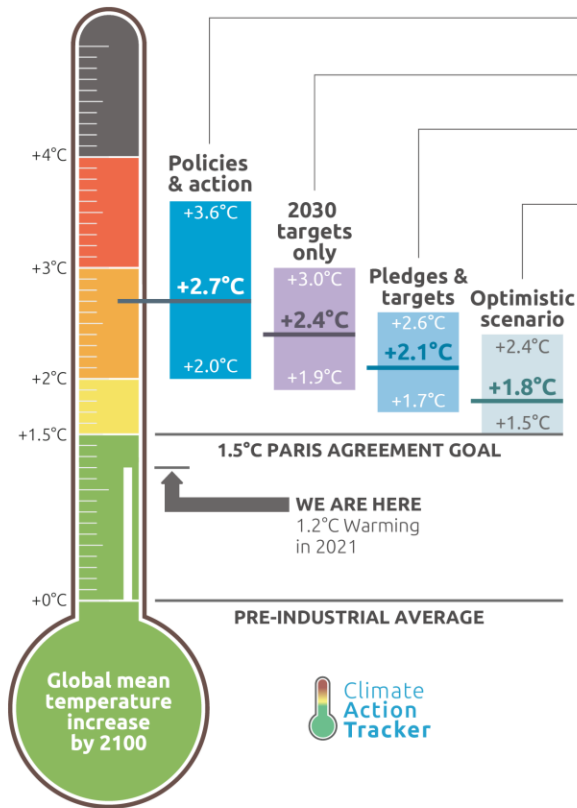
Hope is:

- a state in which one believes that ‘something positive, which does not presently apply to one’s life, could still materialise, and so we yearn for it’ (Lazarus 1999, p.653)
- a goal-directed energy (involving agency) with knowledge of pathways to meet goals (Snyder 2002).

Hope enhances well-being (Mosley et al., 2020)

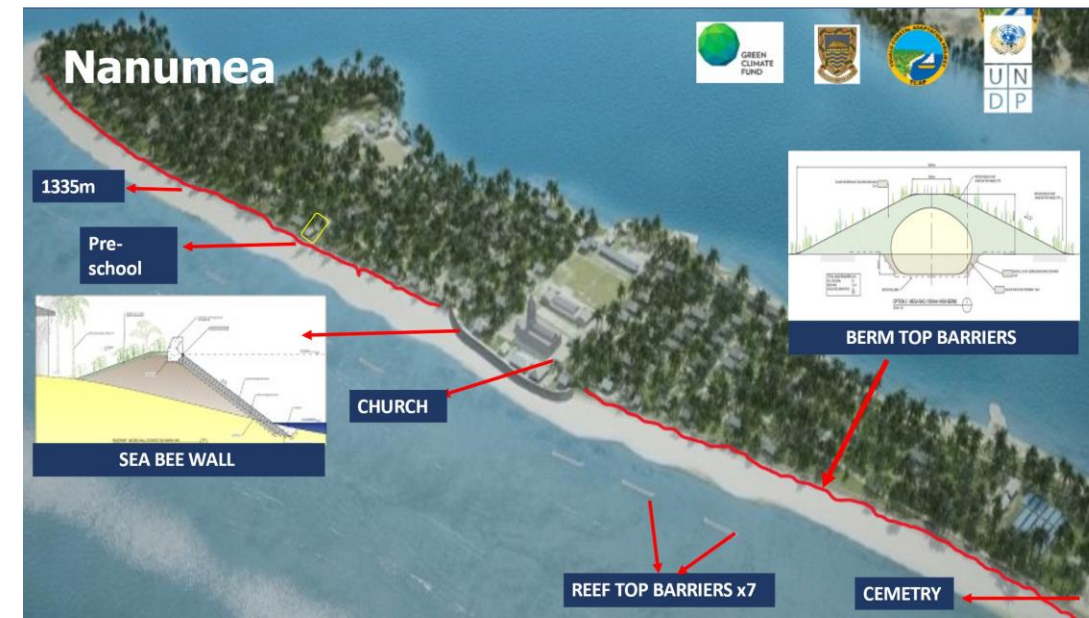
Successful adaptation brings high levels of well-being and hope (Singh et al. 2021)

IV. Hope itself



- Policies & action**
Real world action based on current policies
 - 2030 targets only**
Full implementation of 2030 NDC targets*
 - Pledges & targets**
Full implementation of submitted and binding long-term targets and 2030 NDC targets*
 - Optimistic scenario**
Best case scenario and assumes full implementation of all **announced** targets including net zero targets, LTs and NDCs*
- * If 2030 NDC targets are weaker than projected emissions levels under policies & action, we use levels from policy & action

CAT warming projections
Global temperature increase by 2100
 November 2021 Update



IV. Conclusions

Hope is desirable

- As a means to adaptation, and for well-being

Hope can be cultivated

- focus on solutions, agency, and enablers

Hope takes work

- it requires evidence, and practice
- through new partnerships and networks
- by learning from examples and their enablers
- by coproducing new ideas about adaptation and pathways
- through coalitions of actors with an interest in change